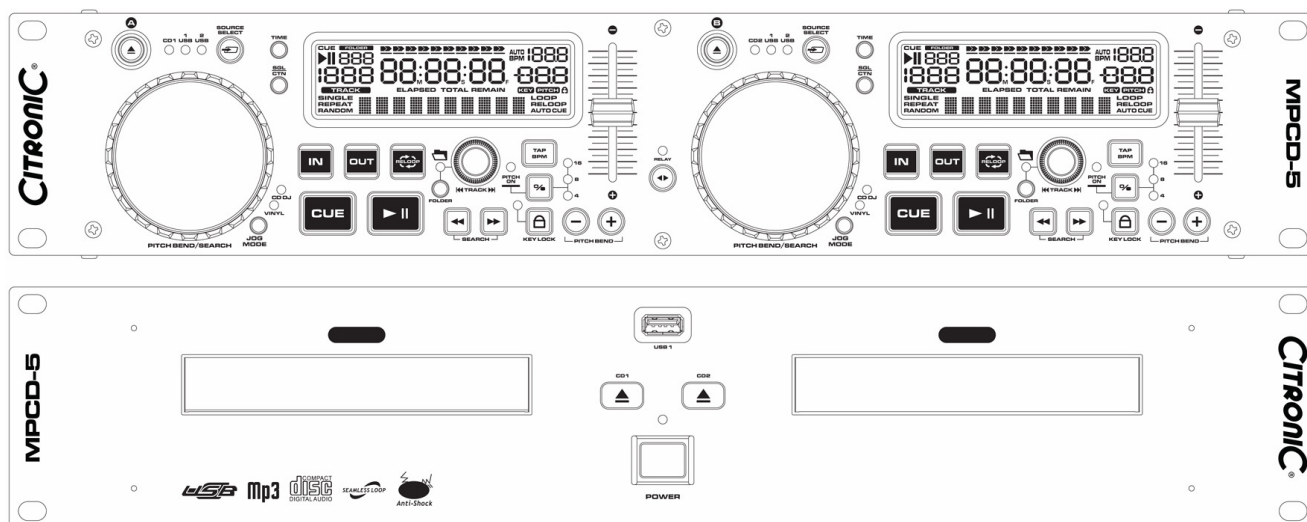


# CITRONIC®

## MPCD-5



## OWNERS MANUAL

Version 1.0

---

## Safety information

1. Read these instructions.
2. Keep these instructions.
3. Heed all warnings.
4. Follow all instructions.
5. Do not use this item near moisture.
6. Clean only with dry cloth.
7. Do not block any of the ventilation openings. Install in accordance with the manufacture's instructions.
8. Do not install near any heat sources such as radiators, stoves or other items (including amplifiers) that produce heat.
9. Do not defeat the safety purpose of the polarized plug. The wide blade is provided for your safety. If the provided plug does not fit into the item or the mains socket, consult an electrician for replacement.
10. Protect the power cord from being walked on or pinched particularly at plug, convenience receptacles, and point where they exit from the item.
11. Only use attachments/accessories specified by the manufacturer.
12. Use only with a stand, tripod, bracket or table suitable for support.
13. Unplug this item during lightning storms or when unused for long periods of time.
14. Refer all servicing to qualified service personnel. Servicing is required when the item has been damaged in any way, such as power supply cord or plug is damaged, liquid has been spilled or objects have fallen onto the item, the item has been exposed to rain or moisture, does not operate normally, or has been dropped (Note: Accidental or cosmetic damage is not covered by the items 12 month warranty)
15. Please keep the unit in a safe environment.
16. Do not store anything on top of the item



**CAUTION**  
DO NOT OPEN  
RISK OF ELECTRIC SHOCK



**CAUTION:** To reduce the risk of electric shock, do not remove any cover. No user-serviceable parts inside. Refer servicing to qualified service personnel only.



The lightning flash with arrowhead symbol within the equilateral triangle is intended to alert the user to the presence of un-insulated "dangerous voltage" within the product's enclosure that may be of sufficient magnitude to constitute a risk of electric shock.



The exclamation point within the equilateral triangle is intended to alert the user to the presence of important operation and maintenance (servicing) instructions in the literature accompanying this appliance.

---

---

## **CITRONIC MPCD-5**

### **Main Features:**

- 1 x USB front and 1 x USB rear inputs which can be read by both players simultaneously
- MP3/WAV compatible from CD or USB (ID3 tags)
- High quality easy read LCD display
- Easy-to-use folder and file search
- Single and continuous play options
- 2 modes of operation (Vinyl & CD DJ)
- Interactive "AQ-touch" sensitive jog wheel
- Seamless loop with fine tune adjustment
- Instant start (sound is produced immediately when the play button is pressed)
- Pitch controlled  $\pm 4, 8, 16\%$  (100% CD only)
- Pitch lock function
- Fader start option
- Auto/Manual tap BPM
- Anti-shock protection
- 19" rack mountable

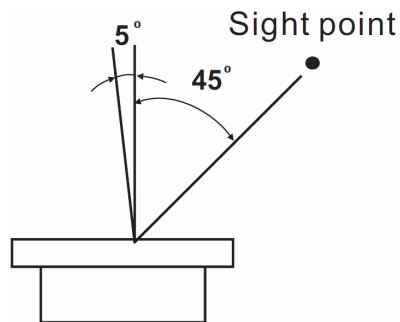
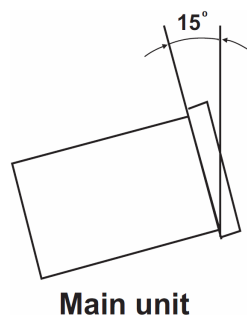
### **Accessories**

- 1 x UK power cable
  - 1 x EU power cable
  - 1 x 8P cable right angle
  - 2 x RCA cable
  - 2 x Fader start cable
-

---

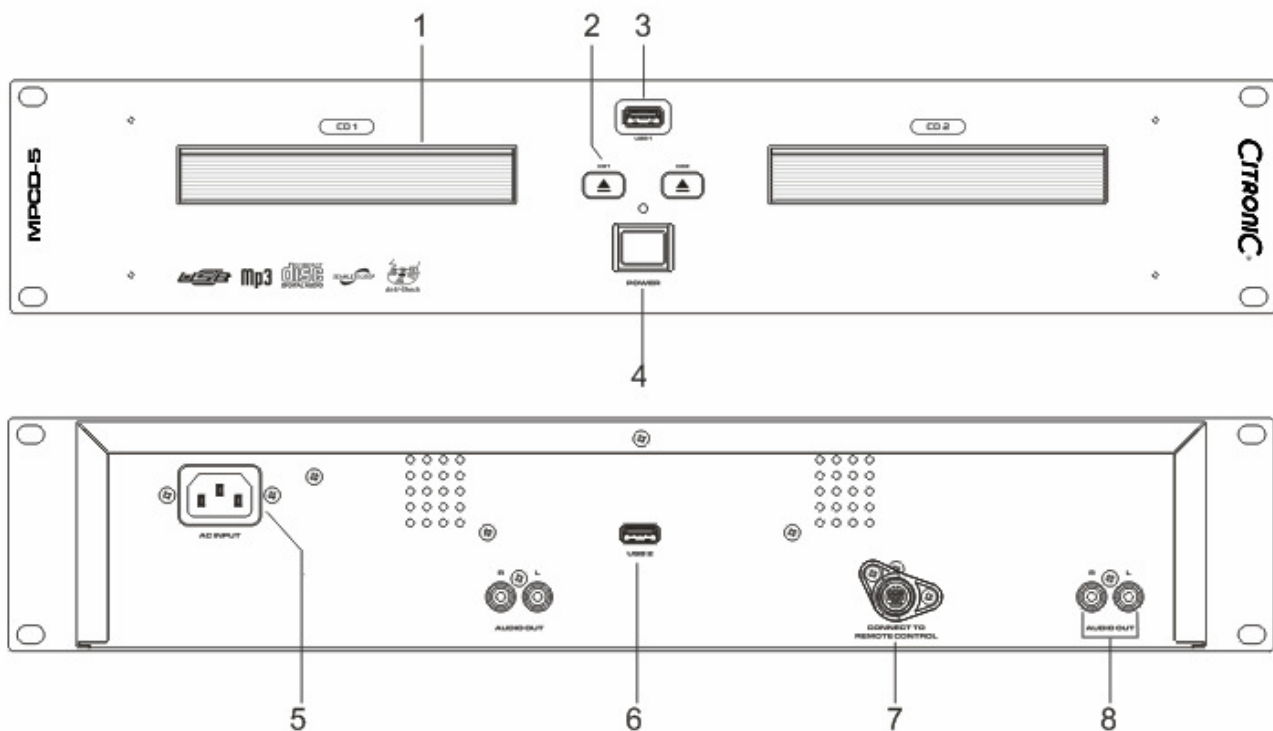
## General Checks and Advice

- 1) Before switching off the power ensure there is no CD in the draw, the disc tray is fully closed and the LCD display reads "NO DISC".
- 2) Installation
  - Place the unit on a flat surface or mount in a secure rack case.
  - The CD unit will work normally when it is mounted when the front panel is within  $15^\circ$  of the vertical plane. If tilted excessively discs may not be loaded properly. Also ensure the head unit at an angle shown below for the best visual results.



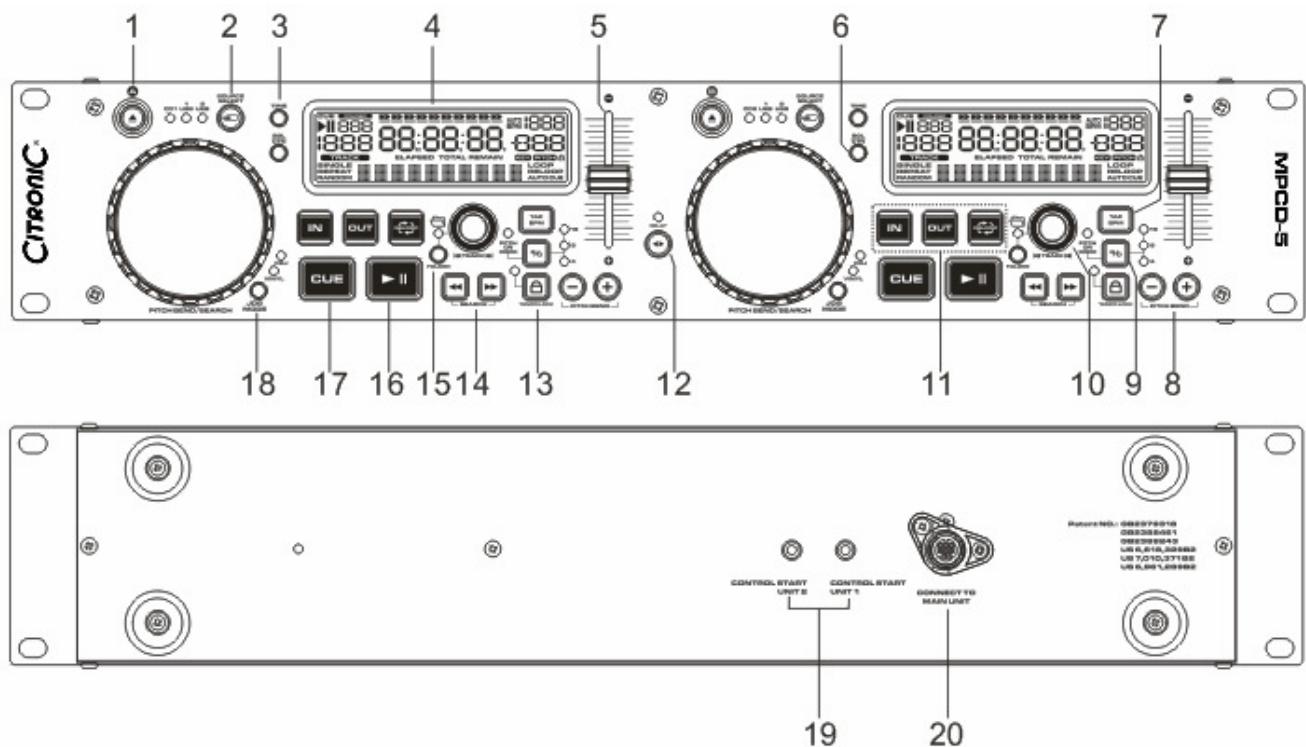
- Be sure the player is mounted in a well ventilated area and is not exposed to direct sunlight, high temperatures or high humidity.
  - Keep the unit as far away as possible from TVs and tuners as the unit may cause undesirable interference to these devices.
- 3) Compact Discs
    - DO NOT allow fingerprints, oil or dust to get on to the surface of the disc.
    - If the disc is dirty, wipe it clean with a soft dry cloth.
    - DO NOT use benzene, white spirit, electrostatic-proof chemical or silicone-treated cloths to clean discs.
    - Always handle discs carefully to prevent damaging the surface; in particular when removing a disc from its case or returning it.
    - DO NOT bend the disc.
    - DO NOT enlarge the hole in the centre of the disc.
    - DO NOT write on the printed side of the disc with hard tipped implements such as a pencil or ball point pen as it could effect playback.
    - Condensation will form if a disc is brought in to a warm area from a colder one.
    - DO NOT attempt to dry the disc with a hair dryer etc.

## Front and Rear Connections



- 1. DISC TRAY** – This tray is used to load and unload a compact disc into the drive mechanism. The tray is opened and closed by pressing the OPEN/CLOSE BUTTON. Never attempt to force the disc tray open or close when the power is turned off.
- 2. OPEN/CLOSE (Transport Tray Open / Close)** – This button is used to open and close the disc tray. NOTE: When a disc is loaded, the tray will not open unless the unit is in PAUSE or CUE mode.
- 3. USB PORT 1 (FRONT)** – This is the USB port where you insert your USB mass storage device for playing MP3 files.
- 4. POWER SWITCH** - This switch is used to control the unit's main power. An LED directly above the power switch will glow to indicate main power is on.
- 5. POWER CONNECTOR** - This is the main power connection. Only use the supplied power cord. Use of any other power may result in severe damages to the unit.
- 6. USB PORT 2 (REAR)** – This is the second USB port where you insert your USB mass storage device for playing MP3 files.
- 7. CONTROL CONNECTOR** - Connect this connector to the control unit using the supplied mini-DIN8 cable.
- 8. AUDIO OUT R & L** - These jacks send a left and right analog mono output signal. Use these jacks to send standard audio to a mixer or receiver. The red colored jack represents the right channel output and white jack represents the left channels output.

## General Functions and Controls



1. **EJECT BUTTON** – This button will open or close the current CD tray (Note: The EJECT function will only work when the unit is in CUE or PAUSE mode to prevent accidentally unloading the disc when in PLAY mode).
2. **SOURCE SELECT BUTTON** – This button lets you toggle between the CD tray and USB port 1 and 2. The selection is indicated by LEDs.
3. **TIME BUTTON** - The button will switch the time value described in the TIME METER between ELAPSED playing time, TRACK remaining time and TOTAL remaining time.
4. **LCD DISPLAY** – The high quality LCD display gives a clear indication of all the functions as they occur (see LCD display section for more details).
5. **PITCH SLIDER** - This slider is used to adjust the playback pitch percentage. Move the slider down to speed up the music and move the slider up to slow the music down.
6. **SGL/CTN BUTTON** - This function allows you to choose between single track play or continuous track play (all tracks in order with no pause between). This function also operates in RELAY mode. With this button you can switch auto cue on and off, by holding the button down for 2 seconds.
7. **TAP BUTTON** - This button is used for manual BPM. When in manual BPM mode, tap this button to the beat of the current track.
8. **PITCH BEND BUTTONS** – The speed rises while the “+” button is pressed and returns to the original pitch when the button is released. The speed drops when the “-” button is pressed and returns to the original pitch when the button is released. These buttons can be used to synchronize the beats of 2 tracks.
9. **PITCH RANGE BUTTON** - Press the button to choose pitch percentage adjustment.  $\pm 4\%$ ,  $\pm 8\%$ ,  $\pm 16\%$ , and  $\pm 100\%$ . (Note: 100% does not work with MP3 music)

---

**10. TRACK / FOLDER KNOB** - This knob has three functions:

- a. You can use it to select the next or previous track/folder by turning the knob forwards or backwards.
- b. Holding down and turning the knob forwards or backwards will rapidly skip through the tracks/folders on your CD/USB by 10 tracks per click.
- c. Press track knob to read the ID3 tags on the file name. Switch between: File name / Title name / Artist / Bit rate on the LCD display.

**11. SEAMLESS LOOP BUTTONS:**

- a. **IN BUTTON** – Pressing the IN button sets a CUE POINT without music interruption. This button is also used to set the starting point of a SEAMLESS LOOP.
- b. **OUT BUTTON** - This button is used to set the ending point of a LOOP. A LOOP is started by pressing the IN button to select the starting point and the OUT button to set the LOOP ending point. The LOOP will continue to play until the OUT button is pressed once again.
- c. **RELOOP BUTTON** - If a SEAMLESS LOOP has been made, but the player is not actively in SEAMLESS LOOP mode.
  - i. Pressing the RELOOP button will instantly reactivate the seamless loop mode. To exit loop, press the OUT button. LOOP will appear in the LCD display when the RELOOP function is available.
  - ii. You can fine tune the SEAMLESS LOOP by holding the RELOOP button and using the jog wheel to set the exact OUT point. Press RELOOP again to set the IN point.

**12. RELAY BUTTON** – Set both sides of the player to single mode and switch the RELAY function on. Alternate tracks will be played from both players until the relay function is deactivated. You can always put a new music source in the device that is waiting in standby mode to create an endless program.

**13. PITCH (KEY) LOCK BUTTON** - This button turns on or turns off the PITCH LOCK function. This function allows you to use the PITCH SLIDER to speed up or slow down playback speed without altering the tonal pitch of the track.

**14. SEARCH BUTTONS** – These search buttons allow you to quickly scan forwards and backwards through the track. The search speed will actively change depending on how long you hold down the button.

**15. FOLDER BUTTON** – Use the FOLDER button to switch between FOLDER and TRACK (see search options above - 10. "TRACK KNOB" When the LED is lit the player is in FOLDER search mode when it is not lit it is in TRACK search mode.  
NOTE: Hold the FOLDER button down for 2 seconds to activate and REPEAT function

**16. PLAY/PAUSE BUTTON** – Pressing the PLAY/PAUSE button once will instantly start the track. Pressing this button again will PAUSE the current track.

**17. CUE BUTTON** – Can be used in a number of ways:

- a. Pressing the CUE button during playback immediately stops the current track and returns the music to the last set cue point.
  - b. In pause mode pressing and holding the CUE button plays the track from the last set CUE point. Releasing CUE button will return the track to the last set CUE point.
  - c. Pressing and holding the Cue will start the track. If PLAY/PAUSE button is pressed during this time the track will continue to play when CUE button is released.
-

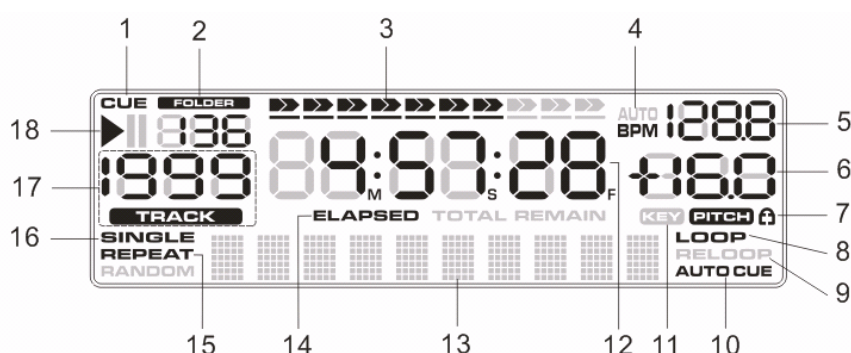
**18. JOG MODE** – The JOG WHEEL has 2 effect functions:

- a. **VINYL MODE** – When the wheel is set to VINYL use the JOG WHEEL to activate the scratch effect by touching the surface of the JOG WHEEL.
- b. **CD DJ MODE** – The JOG WHEEL can be used to pitch bend during playback and be used to frame search in pause mode.

**19. FADER START CONNECTORS** – Use the 3.5mm MONO cables here and connect to a compatible mixer to use the remote start capability.

**20. CONTROL CONNECTOR** – Use the provided mini-DIN8 cable to connect the head unit to the main unit.

## LCD DISPLAY



1. **CUE** - This indicator will glow when the device is in CUE mode. It will flash every time a new CUE point is set.
2. **FOLDER INDICATOR** – Indicates the current folder number selected.
3. **TIME BAR INDICATOR** – The flashing bar shows either the elapsed time or remaining time of the track. The bar will begin to flash when the track is about to end.
4. **BPM STATUS** – This will indicate if the AUTO BPM counter is active.
5. **BPM METER** – Show the BPM value of the currently playing track.
6. **PITCH METER** – Shows the percentage of the track's pitch.
7. **PITCH LOCK SYMBOL** – When highlighted the PITCH LOCK button is active.
8. **LOOP INDICATOR** – Indicates if a loop has been set and can be activated by pressing the RELOOP button.
9. **RELOOP INDICATOR** – Indicates if LOOP is active.
10. **AUTO CUE STATUS** – Indicates if AUTO CUE is activated ("AUTO CUE"). Press and hold SGL/CTN at least 1 second to turn the AUTO CUE function on and off.
11. **KEY INDICATOR** – Indicates when the touch sensitive wheel can be used to control playback or scratch effects.
12. **TIME DISPLAY** – Indicates the time of the chosen time mode in either minutes, seconds and frames.



- 
- 13. MP3 INFORMATION INDICATOR** – Indicates the current name of the folder and the sampling rate.
  - 14. TIME MODE** – Indicates the elapsed time of a track playing ("ELAPSED"), the remaining time of a track ("REMAIN") or the remaining time of the entire disc ("TOTAL REMAIN"). Change between these modes with the Time button.
  - 15. REPEAT INDICATOR** – Indicates whether the unit is in repeat play mode.
  - 16. SINGLE INDICATOR** – Indicates whether the play mode is set to single ("SINGLE") or continuous mode (no display).
  - 17. TRACK INDICATOR** – Indicates the number of the currently playing track.
  - 18. PLAY/PAUSE INDICATOR** – Indicates the device play mode ("▶") or if the player is in pause mode ("||")
-

---

## INTERNAL MENU

Hold TIME BUTTON for 3 seconds to enter the internal menu.

Turn TRACK KNOB to scroll through the different menus and press the TRACK KNOB to enter the corresponding submenu.

Turn TRACK KNOB to change the submenus and press TIME BUTTON to memorize your settings in any operating mode and exit the menu.

1. **Playlist** – Normal / Title/ Artist / Album/ Genre
2. **Sensitivity** – Touch Wheel Sensitivity Adjustment (Adjustment range is -20 ~ +20.)
3. **Sleep Time** – No sleep, 5~120 min
4. **Line Setup** – MODE= 1~3(Line mode)  
Dis=0.5~12.0 sec. (LINE NAME start/stop time adjustment)  
Run=50~2000 msec. (LINE NAME move time adjustment)
5. **Bit rate** – Display ON/OFF
6. **Version** – CON:XX (Control version)  
DSP:XX (DSP version)  
SER:XX (Servo version)
7. **Load Default** – Press TRACK Knob to enter load defaults. (LCD displays "Load OK".)
8. **Exit & Save** – Exit & Save setting to next power on (LCD displays "Saving".) Press the TRACK knob to fast exit & save in any operating mode.

### NOTE:

- **SLEEP TIME:** The CD player automatically shuts off the transport and laser after about 15 minutes when in pause or cue mode). This extends the life of your motor drive and laser. During sleep mode the display shows the word "SLEEP". To wake up the player, just press the cue or play button, the display turns to normal and is ready to receive instructions. You can enter the Sleep Time menu to adjust sleep time, range is 5~120 minutes.
  - **SAVE:** PITCH ON/OFF, PITCH RANGE, SGL/CTN, AUTO CUE, TIME MODE, KEY LOCK, SENSITIVITY, DISPLAY/SCROLL TIME/JOG MODE.
  - **DEFAULTS:** PITCH (ON), PITCH RANGE (8%), PLAY MODE(CTN), AUTO CUE(ON), TIME MODE (REMAIN), KEY LOCK(OFF), SENSITIVITY(0), BIT RATE(Disp. ON), REPEAT MODE (OFF), PLAYLIST (NORMAL), SLEEP TIME (15 min), LINE SETUP(model 1), DISPLAY(1 sec),RUN TIME(150msec)
-

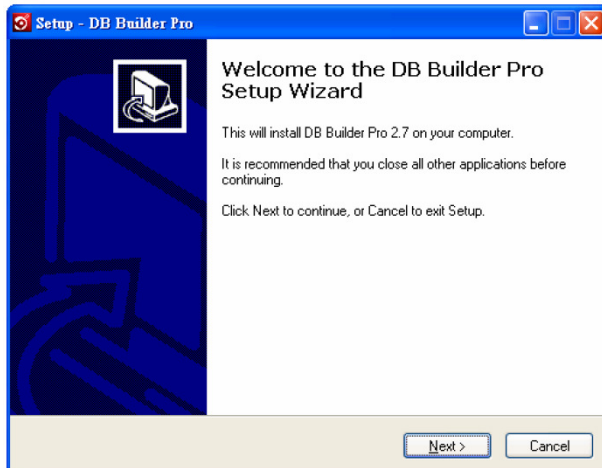
## Data Management

### DATABASE BUILDER:

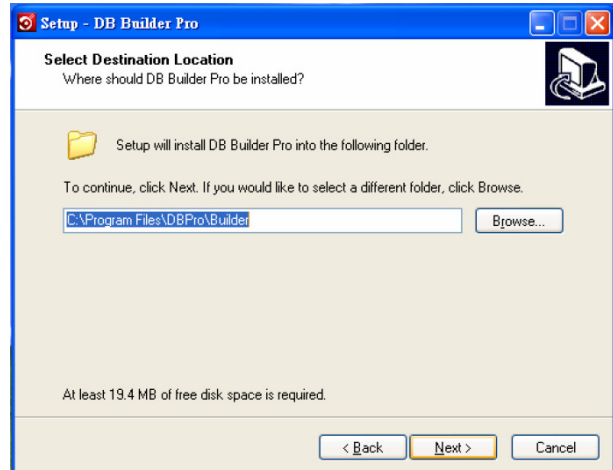
Database management software for the MPCD-5 enables you to search for your files by Title, Artist, Album and Genre.

**Installation:** Refer to the following figures for installing database management software on your computer.

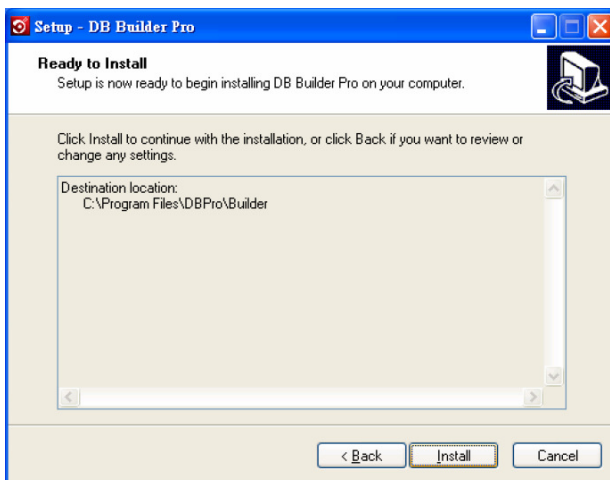
Download available at [www.citronic.com](http://www.citronic.com)



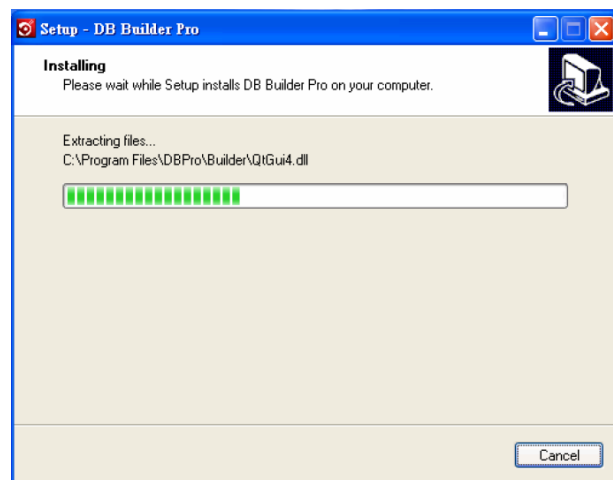
STEP 1: Click next >



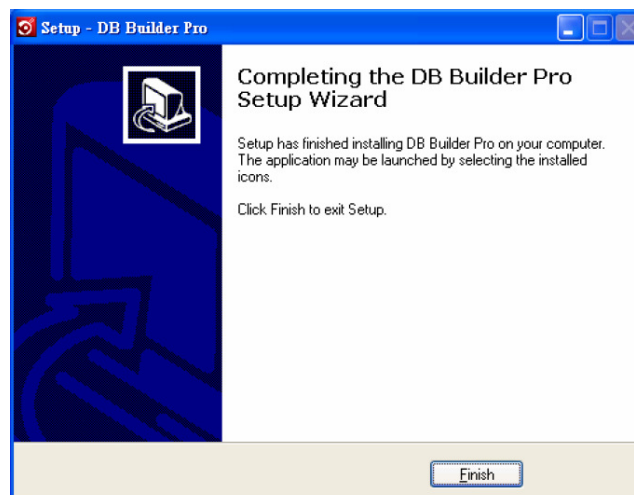
STEP 2: Click next >



STEP 3: Click Install



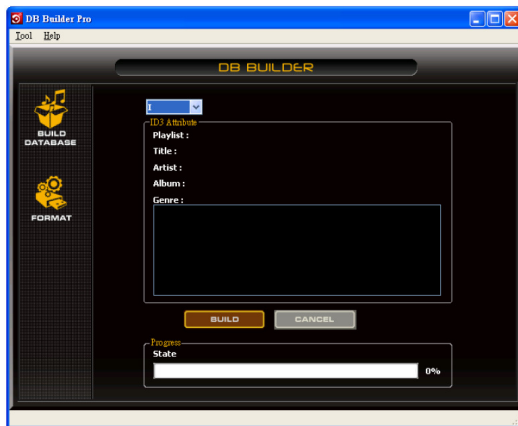
STEP 4: Processing



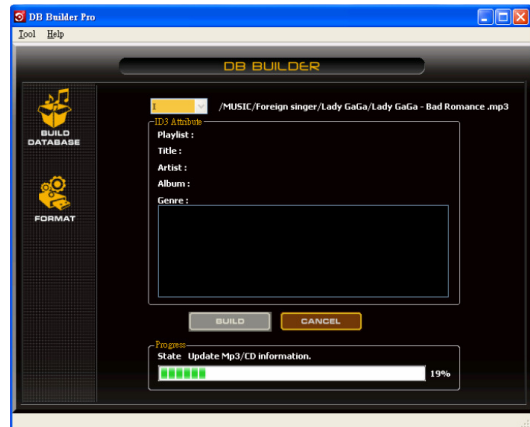
STEP 5: Click finish

The database builder will scan your USB hard drive and create database files to locate the files in your music library in your favor.

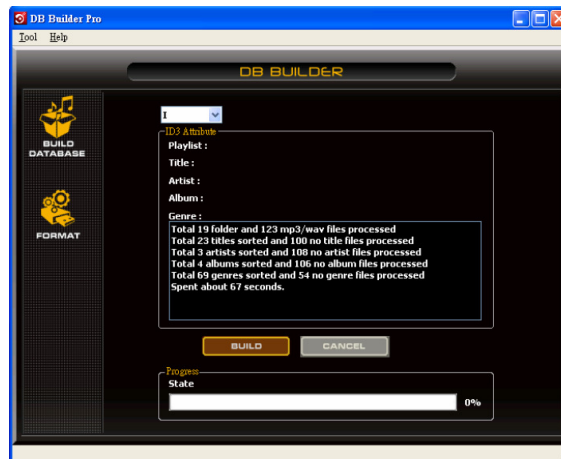
**Scan and create:** Refer to the following figures to process scanning and creating database.  
NOTE: For Vista users please right click the icon and select "RUN AS ADMINISTRATOR"



STEP 1: Select the desired USB hard drive and click build



STEP 2: Processing



STEP 3: Complete

NOTE: Please re-create the database builder whenever you change the contents of your USB device.

### PLAYLIST OPERATION:

1. Hold the TIME button down for 3 seconds to enter the internal menu and turn TRACK knob to search PLAYLIST.
2. Turn the Track knob to select "Normal/ Title/ Artist/ Album/ Genre" (for USB only). And press the Time button again to memorize your setting and exit the menu.

### Use FOLDER button to switch to Folder mode, EG: to select "Artist"

1. Hold and turn the TRACK knob, or hold the TRACK knob and turn outer jog wheel, you can select the folder you like by first letter of Artist, and the Artist alphabet is arranged in order( A, B, C....in order)
2. Turn the TRACK knob or hold the TRACK knob and turn inner Jog wheel to select next "Artist".

### Use FOLDER button to switch to Track mode.

Turn the TRACK knob or hold the TRACK knob and turn Jog wheel to select the track you like.

# SPECIFICATION

## 1. GENERAL SECTION

PRODUCT	MPCD-5
POWER SOURCE	AC100 - 240V, 50/60Hz
POWER CONSUMPTION	16W
DIMENSIONS	Main Unit: 482mm (W) X 267mm (D) X 88.8 mm (H) Control Unit: 482mm (W) X 91.2mm (D) X 94 mm (H)
WEIGHT:	Main Unit: 4.6 Kg Control Unit: 1.7 Kg

## 2. AUDIO CHARACTERISTICS

(CD TEST DISC: TCD-782 & TCD-781; USB TEST FORMAT: MP3, 128KBPS;  
LOAD=100KΩ)

ITEM	TYPICAL	LIMIT	CONDITION
(1) OUTPUT LEVEL			
CD:	2V +/-0.5dB	2V +/-1dB	1KHz, 0dB (TCD782,TRK2)
USB:	1.85V +/-0.5dB	1.85V +/-1dB	1KHz, 0dB (TCD782,TRK2)
(2) CHANNEL BALANCE	WITHIN 0.2dB	WITHIN 1dB	1KHz, 0dB (TCD782,TRK2)
(3) FREQUENCY RESPONSE			
CD:	17-20KHz +/-0.4dB	17-20KHz +/-1dB	0dB OUTPUT (TCD782,TRK2/3/7)
USB:	17-16KHz +/-0.2dB	17-16KHz +/-1dB	0dB OUTPUT (TCD781,TRK1/4/16)
(4) DE-EMPHASIS			
CD:	-20dB +/-0.2dB	-20dB +/-1dB	16KHz,-20dB (TCD782,TRK2/14)
(5) CHANNEL SEPARATION( x 2)			
CD, USB:	93dB	85dB	1KHz, 0dB (TCD782,TRK2/9/11)
(6) THD+N ( x 1)			
CD:	0.008%	0.015%	1KHz, 0dB (TCD782,TRK2)
USB:	0.007%	0.015%	1KHz, 0dB (TCD782,TRK2)
(7) S/N ( x 2)			
CD:	126dB	90dB	1KHZ, 0dB (TCD782,TRK2/8)
USB:	85dB	80dB	1KHZ, 0dB (TCD782,TRK2/8)
(8) DYNAMIC RANGE ( x 2)			
CD:	92dB	88dB	1KHz, -60dB (TCD782,TRK18)
NOTE: *1: WITH 20KHz LOW PASS FILTER. *2: WITH 20KHz LOW PASS FILTER, "IHF-A" WEIGHTED.			

### 3. CD SEARCHING TIME: (TEST DISC: TCD-792)

ITEM	TYPICAL	LIMIT	CONDITION
(1) SHORT ACCESS TIME	2Sec	4Sec	PLAY NEXT TRACK
(2) LONG ACCESS TIME	4Sec	6Sec	TRACK 1 TO 20,20 TO 1

### 4. CD PLAYABILITY:

ITEM	TYPICAL	LIMIT	CONDITION
(1) INTERRUPTION	1mm	0.7mm	TCD-725
(2) BLACK DOT	1mm	0.6mm	TCD-725
(3) FINGER PRINTS	75um	65um	TCD-725
(4) ECCENTRICITY	140um	140um	TCD-712 W/O TRACK JUMP
(5) VERTICAL DEVIATION	1mm	0.5mm	TCD-731R
(6) SCRATCH	2mm	1.2mm	TCD-721 W/O TRACK JUMP

### 5. MP3 FORMAT:

Disc Format	Applicable file extensions	mp3. MP3. mP3. Mp3
	ISO9660	Max. 63 characters
	Joliet	Max. 63 characters
	CD-ROM sector format	mode-1 only
	Max. number of Folders	255
	Max. number of files	Max. 999 files (* note #1)
USB Format	File System	FAT 12/16/32
	Applicable file extensions	mp3. MP3. mP3. Mp3
	Max. number of Folders	999
	Max. number of files	Max. 999 files
MP3 Format	MPEG 1 Layer 3 standard (ISO/IEC 11172-3), which provides for single channel ('mono') and two-channel ('stereo') coding at sampling rates of 32, 44.1 and 48kHz.	32/40/48/56/80/96/112/128/160/192/224 /256/320 kbps Xing/VBRI VBR
	MPEG 2 Layer 3 standard (ISO/IEC 13818-3), which provides for similar coding at sampling rates of 16, 22.05 and 24 kHz.	32/40/48/56/64/80/96/112/144/160 Kbps Xing/VBRI VBR
	MPEG 2.5 Layer 3 standard, which provides for similar coding at sampling rates of 8, 11.025 and 12 kHz.	32/40/48/56/64/80/96/112/144/160 Kbps Xing/VBRI VBR
Disc Writing Method	Disc at Once and Track at Once	
	Multi Session	If the 1 <sup>st</sup> session is CDDA, you can playback Only CDDA track, If the 1 <sup>st</sup> session is MP3, you can playback only MP3 file.

Note #1: max.255 files each folder

---

**FOR MORE INFORMATION ON CITRONIC PRODUCTS VISIT**

**[WWW.CITRONIC.COM](http://WWW.CITRONIC.COM)**

---